

Courtesy Of Andrew Blais Of Maxwell Heritage Realty

## \$185,900 - 808 10134 100 Street, Edmonton

MLS® #E4416832

**\$185,900**

1 Bedroom, 1.00 Bathroom, 545 sqft  
Condo / Townhouse on 0.00 Acres

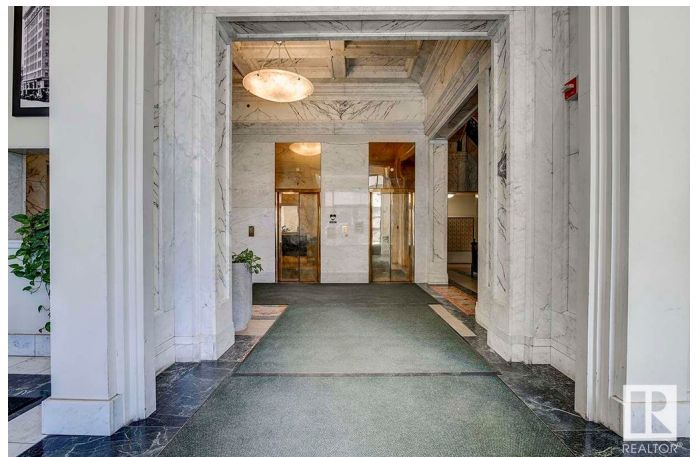
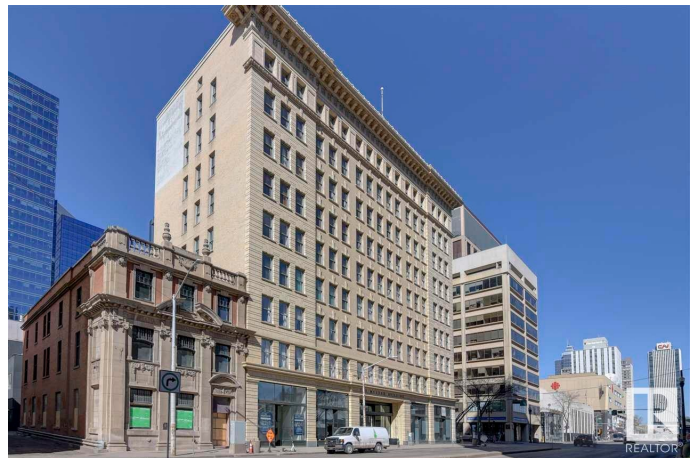
Downtown (Edmonton), Edmonton, AB

#808 is a North facing loft high above the noise of street & pedestrian traffic. Contemporary living experience offered with its open-concept space looking down on the quiet Rice Howard Way viewing its green of summer-time trees, patios & pedestrian areas. With plenty of natural light, it also offers the original character with soaring ceilings, wooden window frames, but also with many recent upgrades. Kitchen and floors recently renovated, and newly painted last fall (2022), modern appliances and tiling. However, a huge bonus is POWER, HEAT & WATER are all INCLUDED in the condo fees! This classy high-rise condo is designated a Provincial Historic Resource, due to its rich local legacy and note-worthy architecture. The attractive lobby features the original marble walls, and soaring ceilings. LRT stations, bus stations can be accessed in any direction from the building within 5 minutes. Close by: City Hall on Churchill Square, the new Edmonton Public Library, the Art centre and luxury hotels.

Built in 1905

### Essential Information

MLS® #	E4416832
Price	\$185,900
Bedrooms	1



Bathrooms	1.00
Full Baths	1
Square Footage	545
Acres	0.00
Year Built	1905
Type	Condo / Townhouse
Sub-Type	Apartment High Rise
Style	Loft
Status	Active

### **Community Information**

Address	808 10134 100 Street
Area	Edmonton
Subdivision	Downtown (Edmonton)
City	Edmonton
County	ALBERTA
Province	AB
Postal Code	T5J 0N8

### **Amenities**

Amenities	On Street Parking, Security Door
Parking	See Remarks

### **Interior**

Appliances	Dishwasher-Built-In, Refrigerator, Stove-Electric, Washer, Window Coverings, See Remarks
Heating	Hot Water, Natural Gas
# of Stories	9
Stories	1
Has Basement	Yes
Basement	None, No Basement

### **Exterior**

Exterior	Concrete, Brick
Exterior Features	Corner Lot, Picnic Area, Playground Nearby, Public Transportation, Schools, Shopping Nearby, View City, View Downtown
Roof	Tar & Gravel
Construction	Concrete, Brick
Foundation	Concrete Perimeter

## Additional Information

Date Listed	January 2nd, 2025
Days on Market	71
Zoning	Zone 12
Condo Fee	\$545

DATA IS DEEMED RELIABLE BUT IS NOT GUARANTEED ACCURATE BY THE REALTORS® ASSOCIATION OF EDMONTON. COPYRIGHT 2025 BY THE REALTORS® ASSOCIATION OF EDMONTON. ALL RIGHTS RESERVED. Trademarks are owned or controlled by the Canadian Real Estate Association (CREA) and identify real estate professionals who are members of CREA (REALTOR®, REALTORS®) and/or the quality of services they provide (MLS®, Multiple Listing Service®)

Listing information last updated on March 14th, 2025 at 4:47am MDT