

Courtesy Of Jay Lewis Of RE/MAX Excellence

\$875,000 - 2008 Genesis Lane, Stony Plain

MLS® #E4417717

\$875,000

4 Bedroom, 3.00 Bathroom, 1,684 sqft
Single Family on 0.00 Acres

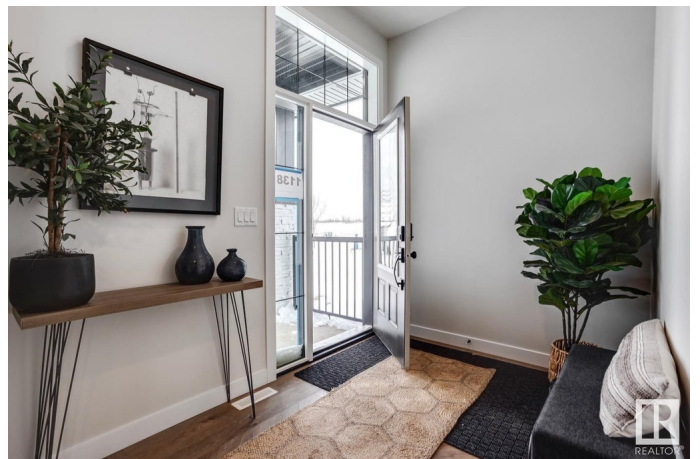
Genesis On The Lakes, Stony Plain, AB

This stunning, new-built bungalow with a triple attached garage perfectly blends luxury and comfort. This home greets you with a spacious front foyer and a closet for convenience. The open-concept kitchen, dining, and living areas are perfect for entertaining, with the living room boasting an electric fireplace. The kitchen is a chef's dream, with a large island, eating bar, and access to a huge pantry with built-in shelving. The primary bedroom is a peaceful retreat with a 5-piece ensuite, including his and hers sinks, a stand-up shower, a soaker tub, and a large walk-in closet. A second bedroom, 4-piece bath and laundry room complete the main floor. The fully finished basement includes a large family room, theatre room, 2 more bedrooms, and a 4-piece ensuite bath connecting to both bedrooms with separate sinks and a standing shower. This home is a true gem, situated in a great neighbourhood with access to the lake and park and just minutes from all amenities. IMMEDIATE POSSESSION

Built in 2025

Essential Information

MLS® #	E4417717
Price	\$875,000
Bedrooms	4



Bathrooms	3.00
Full Baths	3
Square Footage	1,684
Acres	0.00
Year Built	2025
Type	Single Family
Sub-Type	Detached Single Family
Style	Bungalow
Status	Active

Community Information

Address	2008 Genesis Lane
Area	Stony Plain
Subdivision	Genesis On The Lakes
City	Stony Plain
County	ALBERTA
Province	AB
Postal Code	T7Z 0G3

Amenities

Amenities	Deck, No Animal Home, No Smoking Home
Parking	Triple Garage Attached

Interior

Interior Features	ensuite bathroom
Appliances	Dishwasher-Built-In, Hood Fan, Oven-Built-In, Oven-Microwave, Refrigerator, Stove-Electric
Heating	Forced Air-1, Natural Gas
Fireplace	Yes
Fireplaces	Insert
Stories	2
Has Basement	Yes
Basement	Full, Finished

Exterior

Exterior	Wood, Stone, Vinyl
Exterior Features	Lake Access Property, Park/Reserve, Playground Nearby, Schools, Shopping Nearby
Roof	Asphalt Shingles

Construction Wood, Stone, Vinyl
Foundation Concrete Perimeter

Additional Information

Date Listed January 11th, 2025
Days on Market 86
Zoning Zone 91

DATA IS DEEMED RELIABLE BUT IS NOT GUARANTEED ACCURATE BY THE REALTORS® ASSOCIATION OF EDMONTON. COPYRIGHT 2025 BY THE REALTORS® ASSOCIATION OF EDMONTON. ALL RIGHTS RESERVED. Trademarks are owned or controlled by the Canadian Real Estate Association (CREA) and identify real estate professionals who are members of CREA (REALTOR®, REALTORS®) and/or the quality of services they provide (MLS®, Multiple Listing Service®)

Listing information last updated on April 7th, 2025 at 6:32pm MDT