

\$335,000 - 319 1316 Windermere Way, Edmonton

MLS® #E4418594

\$335,000

2 Bedroom, 2.00 Bathroom, 910 sqft
Condo / Townhouse on 0.00 Acres

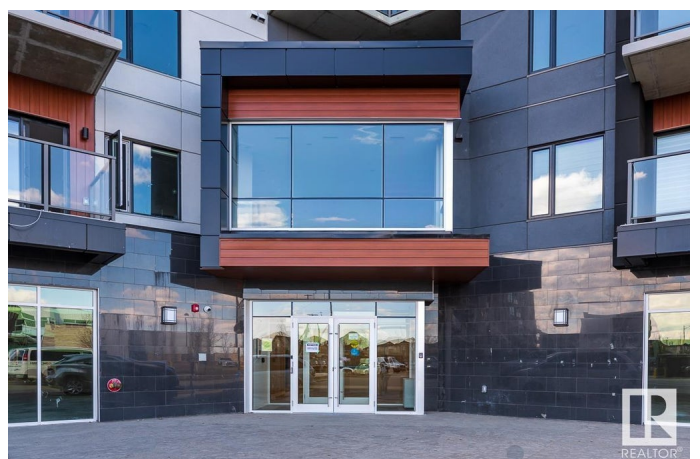
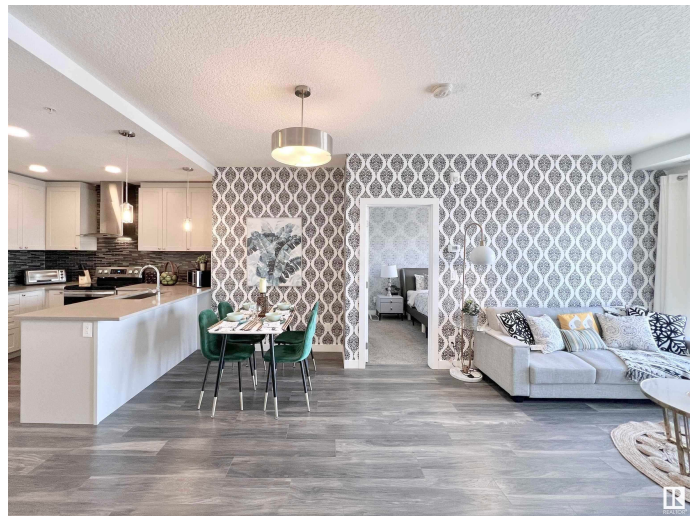
Windermere, Edmonton, AB

Builder's Plan indicates 968 sq.ft for the enclosed area of this unit Welcome to LUX, a brand new STEEL & CONCRETE luxury building in Upper Windermere offers all amenities. 18+ building. Condo allows pet and Airbnb. Stunning 2 bdrm & Den + 2 full bathrooms. Titled U/G Parking(P1#75). In suite Laundry. Decorated with only the best of everything. Highlights: 9' ceilings; energy efficient windows; Upgraded plank floor through out the unit; Kitchen-Complete ss gourmet appliances; Chimney hood fan; white maple cabinets up tp ceilings; Contemporary, quartz countertops; Glass tile backsplash; Elegant bathroom: Luxurious, porcelain tiled showers with rain shower head; Full width vanity mirrors. One Secured underground parking (Heated and ventilated). It retains the value of peaceful living with great access to all amenities and transportation, community gardens, a K-9 school and while being conveniently close to all amenities.

Built in 2019

Essential Information

MLS® #	E4418594
Price	\$335,000
Bedrooms	2
Bathrooms	2.00



Full Baths	2
Square Footage	910
Acres	0.00
Year Built	2019
Type	Condo / Townhouse
Sub-Type	Lowrise Apartment
Style	Single Level Apartment
Status	Active

Community Information

Address	319 1316 Windermere Way
Area	Edmonton
Subdivision	Windermere
City	Edmonton
County	ALBERTA
Province	AB
Postal Code	T6W 2J3

Amenities

Amenities	Ceiling 9 ft., Deck, No Animal Home, No Smoking Home, Parking-Visitor, Patio, Secured Parking
Parking	Heated, Underground

Interior

Interior Features	ensuite bathroom
Appliances	Dishwasher-Built-In, Dryer, Hood Fan, Refrigerator, Stove-Electric, Washer
Heating	Heat Pump, Natural Gas
# of Stories	5
Stories	1
Has Basement	Yes
Basement	None, No Basement

Exterior

Exterior	Concrete, Metal, Stone
Exterior Features	Public Transportation, Schools, Shopping Nearby, See Remarks
Roof	See Remarks
Construction	Concrete, Metal, Stone
Foundation	Concrete Perimeter

School Information

Elementary	Daniel Woodall
Middle	Riverbend/St John
High	Lillian Osborne/St John

Additional Information

Date Listed	January 20th, 2025
Days on Market	78
Zoning	Zone 56
Condo Fee	\$463

DATA IS DEEMED RELIABLE BUT IS NOT GUARANTEED ACCURATE BY THE REALTORS® ASSOCIATION OF EDMONTON. COPYRIGHT 2025 BY THE REALTORS® ASSOCIATION OF EDMONTON. ALL RIGHTS RESERVED. Trademarks are owned or controlled by the Canadian Real Estate Association (CREA) and identify real estate professionals who are members of CREA (REALTOR®, REALTORS®) and/or the quality of services they provide (MLS®, Multiple Listing Service®)

Listing information last updated on April 8th, 2025 at 1:02pm MDT