

Courtesy Of Jason F Biagi Of Initia Real Estate

\$899,800 - 35 10550 Ellerslie Road, Edmonton

MLS® #E4419947

\$899,800

4 Bedroom, 3.00 Bathroom, 2,283 sqft
Condo / Townhouse on 0.00 Acres

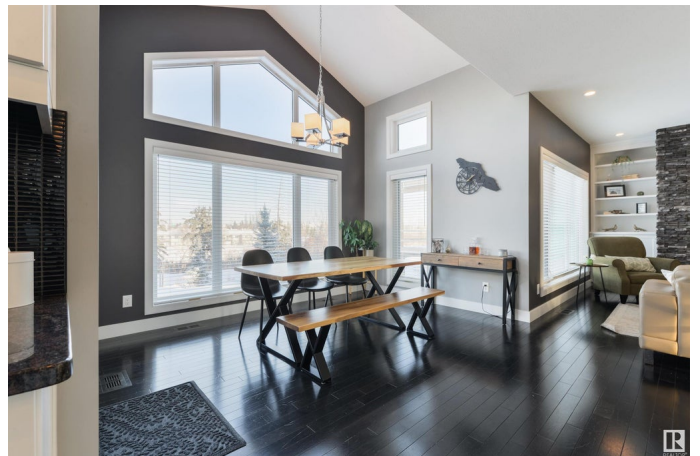
Richford, Edmonton, AB

Nestled in an exclusive gated community, this stunning home offers breathtaking views of Blackmud Creek. Meticulously maintained, this luxury residence features 4 bedrooms, a den, a spacious bonus room upstairs, Astoria Lighting package, and a fully finished basement designed for ultimate entertainment. The gourmet kitchen is a chef's dream, boasting granite countertops, soft-close cabinetry, and high-end finishes. With 9 ft vaulted ceilings and built-in surround sound, every detail enhances the elegance and comfort of this home. The primary suite is a true retreat, offering spectacular ravine views, a spa-like ensuite with an oversized tiled shower, and dual sinks. Step outside to beautifully landscaped front and backyards, while enjoying features such as poly garage flooring, AC, and composite decking. This Green Built home includes snow removal and common area maintenance. Conveniently located near shopping, the airport, and major amenities. this is an opportunity you don't want to miss!

Built in 2013

Essential Information

MLS® #	E4419947
Price	\$899,800



Bedrooms	4
Bathrooms	3.00
Full Baths	2
Half Baths	2
Square Footage	2,283
Acres	0.00
Year Built	2013
Type	Condo / Townhouse
Sub-Type	Detached Condominium
Style	2 Storey
Status	Active

Community Information

Address	35 10550 Ellerslie Road
Area	Edmonton
Subdivision	Richford
City	Edmonton
County	ALBERTA
Province	AB
Postal Code	T6W 0Y2

Amenities

Amenities	Off Street Parking, Air Conditioner, Ceiling 9 ft., Closet Organizers, Deck, Detectors Smoke, Dog Run-Fenced In, Exterior Walls- 2"x6", Fire Pit, Hot Tub, Hot Water Natural Gas, No Smoking Home, Patio, Smart/Program. Thermostat, Vaulted Ceiling, See Remarks, Natural Gas BBQ Hookup
Parking	Double Garage Attached

Interior

Interior Features	ensuite bathroom
Appliances	Air Conditioning-Central, Dishwasher-Built-In, Dryer, Garage Control, Garage Opener, Garburator, Oven-Built-In, Oven-Microwave, Refrigerator, Washer, Window Coverings, Stove-Induction, Garage Heater, Hot Tub
Heating	Forced Air-1, Natural Gas
Fireplace	Yes
Fireplaces	See Remarks
Stories	3
Has Basement	Yes

Basement Full, Finished

Exterior

Exterior Wood, Stone, Hardie Board Siding

Exterior Features Airport Nearby, Backs Onto Park/Trees, Creek, Cross Fenced, Fenced, Gated Community, Golf Nearby, Public Transportation, Ravine View, Schools

Roof Asphalt Shingles

Construction Wood, Stone, Hardie Board Siding

Foundation Concrete Perimeter

Additional Information

Date Listed January 31st, 2025

Days on Market 65

Zoning Zone 55

Condo Fee \$168

DATA IS DEEMED RELIABLE BUT IS NOT GUARANTEED ACCURATE BY THE REALTORS® ASSOCIATION OF EDMONTON. COPYRIGHT 2025 BY THE REALTORS® ASSOCIATION OF EDMONTON. ALL RIGHTS RESERVED. Trademarks are owned or controlled by the Canadian Real Estate Association (CREA) and identify real estate professionals who are members of CREA (REALTOR®, REALTORS®) and/or the quality of services they provide (MLS®, Multiple Listing Service®)

Listing information last updated on April 6th, 2025 at 9:47am MDT