

\$510,000 - 17043 38 Street, Edmonton

MLS® #E4421880

\$510,000

3 Bedroom, 2.50 Bathroom, 1,750 sqft
Single Family on 0.00 Acres

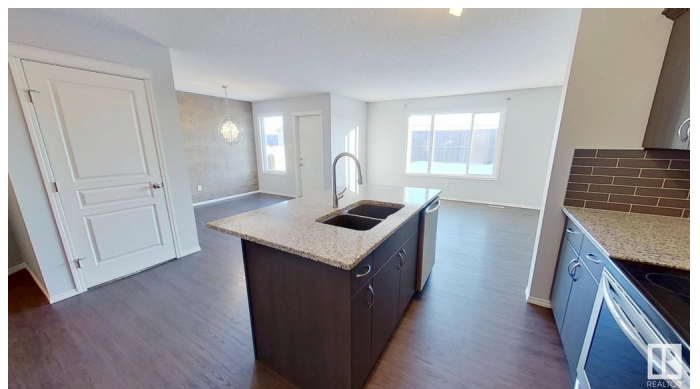
Cy Becker, Edmonton, AB

This beautifully maintained property offers the perfect blend of comfort and convenience. Located in a prime area, it is just minutes from schools, shopping centers, and easy access to the Anthony Henday. Surrounded by numerous parks and walking trails, it's ideal for outdoor enthusiasts and families alike. The neighborhood is friendly and welcoming, with plenty of playgrounds and green spaces for children to enjoy. Inside, the home boasts spacious, well-lit living areas designed for both relaxation and entertaining. Beautiful view of the neighborhood pond from the master bedroom. A must see for those seeking a vibrant and family-friendly community.

Built in 2015

Essential Information

| | |
|----------------|---------------|
| MLS® # | E4421880 |
| Price | \$510,000 |
| Bedrooms | 3 |
| Bathrooms | 2.50 |
| Full Baths | 2 |
| Half Baths | 1 |
| Square Footage | 1,750 |
| Acres | 0.00 |
| Year Built | 2015 |
| Type | Single Family |



| | |
|----------|------------------------|
| Sub-Type | Detached Single Family |
| Style | 2 Storey |
| Status | Active |

Community Information

| | |
|-------------|-----------------|
| Address | 17043 38 Street |
| Area | Edmonton |
| Subdivision | Cy Becker |
| City | Edmonton |
| County | ALBERTA |
| Province | AB |
| Postal Code | T5Y 3S1 |

Amenities

| | |
|-----------|---|
| Amenities | Detectors Smoke, Front Porch, Hot Water Natural Gas, No Smoking Home, Smart/Program. Thermostat |
| Parking | Double Garage Attached, Front Drive Access, Insulated |

Interior

| | |
|-------------------|--|
| Interior Features | ensuite bathroom |
| Appliances | Dishwasher-Built-In, Dryer, Garage Control, Garage Opener, Hood Fan, Humidifier-Power(Furnace), Oven-Microwave, Refrigerator, Stove-Electric, Washer |
| Heating | Forced Air-1, Natural Gas |
| Stories | 2 |
| Has Basement | Yes |
| Basement | Full, Unfinished |

Exterior

| | |
|-------------------|---|
| Exterior | Wood, Stone, Vinyl |
| Exterior Features | Backs Onto Park/Trees, Fenced, Landscaped, Playground Nearby, Public Transportation, Schools, Shopping Nearby |
| Roof | Asphalt Shingles |
| Construction | Wood, Stone, Vinyl |
| Foundation | Concrete Perimeter |

Additional Information

| | |
|----------------|---------------------|
| Date Listed | February 18th, 2025 |
| Days on Market | 47 |
| Zoning | Zone 03 |

DATA IS DEEMED RELIABLE BUT IS NOT GUARANTEED ACCURATE BY THE REALTORS® ASSOCIATION OF EDMONTON. COPYRIGHT 2025 BY THE REALTORS® ASSOCIATION OF EDMONTON. ALL RIGHTS RESERVED. Trademarks are owned or controlled by the Canadian Real Estate Association (CREA) and identify real estate professionals who are members of CREA (REALTOR®, REALTORS®) and/or the quality of services they provide (MLS®, Multiple Listing Service®)

Listing information last updated on April 6th, 2025 at 8:02am MDT