

\$157,500 - 4622 55 Avenue, Wetaskiwin

MLS® #E4422576

\$157,500

0 Bedroom, 0.00 Bathroom,
Single Family on 0.00 Acres

Recline, Wetaskiwin, AB

130' x 60' vacant lot in Wetaskiwin! Can build a single family home OR up to a 4plex with 4 legal basement suites. Preliminary plans for a 6plex available. Comes with topographic survey.



Essential Information

MLS® #	E4422576
Price	\$157,500
Bathrooms	0.00
Acres	0.00
Type	Single Family
Sub-Type	Vacant Lot/Land
Status	Active

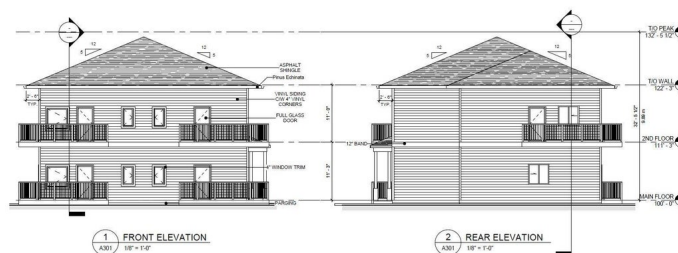
Community Information

Address	4622 55 Avenue
Area	Wetaskiwin
Subdivision	Recline
City	Wetaskiwin
County	ALBERTA
Province	AB
Postal Code	T9A 1A2

Exterior

Exterior Features See Remarks

Additional Information



Date Listed February 22nd, 2025

Days on Market 56

Zoning Zone 80

DATA IS DEEMED RELIABLE BUT IS NOT GUARANTEED ACCURATE BY THE REALTORS® ASSOCIATION OF EDMONTON. COPYRIGHT 2025 BY THE REALTORS® ASSOCIATION OF EDMONTON. ALL RIGHTS RESERVED. Trademarks are owned or controlled by the Canadian Real Estate Association (CREA) and identify real estate professionals who are members of CREA (REALTOR®, REALTORS®) and/or the quality of services they provide (MLS®, Multiple Listing Service®)

Listing information last updated on April 18th, 2025 at 11:47pm MDT