

**\$275,500**

Churchill Meadow, Rural Leduc County, AB

An incredible opportunity to build your dream home on 32 pocket lot in the desirable Churchill Meadows community. Choose your preferred builder, and weâ€™™ help bring your vision to life. Located near Diamond Estate and Lucas Estate, this rapidly growing neighborhood offers both a peaceful atmosphere and the charm of luxury living. Experience the perfect balance of a thriving community and serene surroundings.

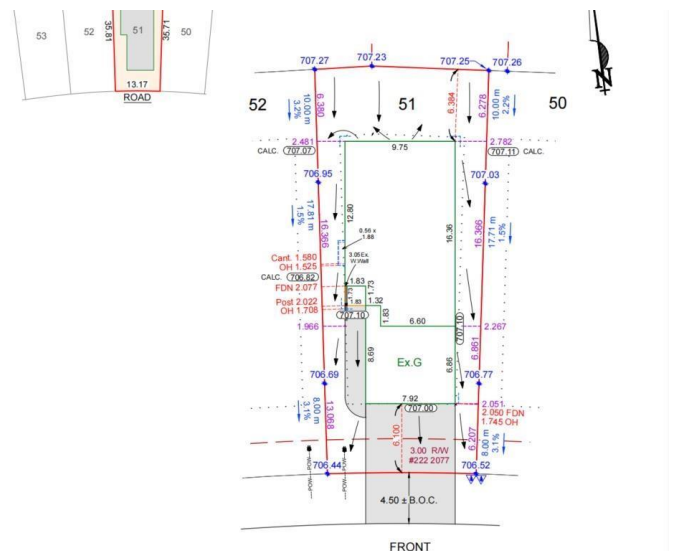


## Essential Information

|           |                 |
|-----------|-----------------|
| MLS® #    | E4422613        |
| Price     | \$275,500       |
| Bathrooms | 0.00            |
| Acres     | 0.10            |
| Type      | Rural           |
| Sub-Type  | Vacant Lot/Land |
| Status    | Active          |

## Community Information

|             |                    |
|-------------|--------------------|
| Address     | 2538 63 Ave        |
| Area        | Rural Leduc County |
| Subdivision | Churchill Meadow   |
| City        | Rural Leduc County |
| County      | ALBERTA            |
| Province    | AB                 |
| Postal Code | T4X 3A4            |



**Exterior**

Exterior Features    Airport Nearby

**Additional Information**

Date Listed                February 23rd, 2025

Days on Market        56

Zoning                    Zone 80

DATA IS DEEMED RELIABLE BUT IS NOT GUARANTEED ACCURATE BY THE REALTORS® ASSOCIATION OF EDMONTON. COPYRIGHT 2025 BY THE REALTORS® ASSOCIATION OF EDMONTON. ALL RIGHTS RESERVED.Trademarks are owned or controlled by the Canadian Real Estate Association (CREA) and identify real estate professionals who are members of CREA (REALTOR®, REALTORS®) and/or the quality of services they provide (MLS®, Multiple Listing Service®)

Listing information last updated on April 20th, 2025 at 6:47am MDT