

\$514,900 - 76 Hazelwood Lane, Spruce Grove

MLS® #E4424101

\$514,900

3 Bedroom, 3.00 Bathroom, 1,688 sqft
Single Family on 0.00 Acres

Hilldowns, Spruce Grove, AB

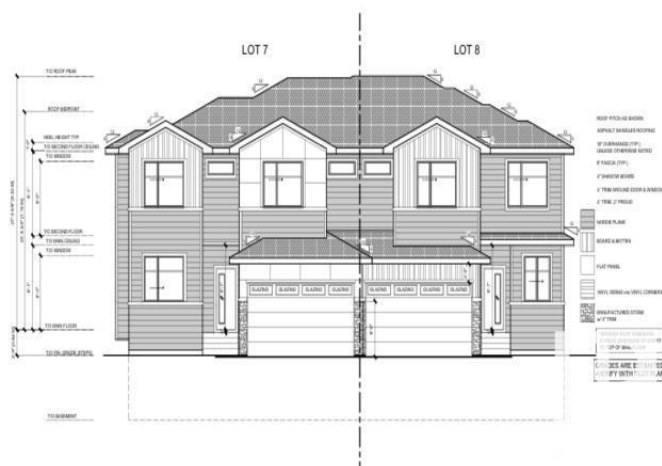
Exceptional 30 ft wide Semi-Detached Home â€” A RARE OPPORTUNITY! This brand-new 1700 sq ft semi-detached house is a must-see! With rare width, it offers more space than typical detached home. Step inside to a striking open-to-below great room featuring an electric fireplace and stunning ceiling heights. The main floor boasts a versatile den and a full bath perfect for guests or a home office. Stairs decorated with spindle railing. Upstairs, enjoy 3 spacious beds, closets with MDF shelves & 2 stylish baths, with massive windows that flood the space with light. The kitchen is a showstopper with dual-tone cabinets & quartz countertops. The exterior is equipped with upgraded Hardie & vinyl siding for top-notch durability. Plus, side entrance leads to basementâ€”ideal for future development! Location? Youâ€™re just a 2-minute walk to a park, steps from a school and shopping center & only 3 minutes from the Yellowhead Highway. The home is a rare findâ€”donâ€™t miss your chance to chose your own finishes! Act now!

Built in 2025

Essential Information

MLS® # E4424101

Price \$514,900



Bedrooms	3
Bathrooms	3.00
Full Baths	3
Square Footage	1,688
Acres	0.00
Year Built	2025
Type	Single Family
Sub-Type	Half Duplex
Style	2 Storey
Status	Active

Community Information

Address	76 Hazelwood Lane
Area	Spruce Grove
Subdivision	Hilldowns
City	Spruce Grove
County	ALBERTA
Province	AB
Postal Code	T7X 0R7

Amenities

Amenities	Carbon Monoxide Detectors, Ceiling 9 ft., Closet Organizers, Detectors Smoke, No Animal Home, No Smoking Home, HRV System, 9 ft. Basement Ceiling
Parking	Double Garage Attached

Interior

Interior Features	ensuite bathroom
Appliances	Garage Control, Garage Opener, Hood Fan, Builder Appliance Credit
Heating	Forced Air-2, Electric
Stories	2
Has Basement	Yes
Basement	Full, Unfinished

Exterior

Exterior	Wood, Stone, Vinyl, Hardie Board Siding
Exterior Features	Airport Nearby, Cul-De-Sac, Playground Nearby, Schools, Shopping Nearby, Stream/Pond
Roof	Asphalt Shingles

Construction Wood, Stone, Vinyl, Hardie Board Siding
Foundation Concrete Perimeter

Additional Information

Date Listed March 5th, 2025
Days on Market 42
Zoning Zone 91

DATA IS DEEMED RELIABLE BUT IS NOT GUARANTEED ACCURATE BY THE REALTORS® ASSOCIATION OF EDMONTON. COPYRIGHT 2025 BY THE REALTORS® ASSOCIATION OF EDMONTON. ALL RIGHTS RESERVED. Trademarks are owned or controlled by the Canadian Real Estate Association (CREA) and identify real estate professionals who are members of CREA (REALTOR®, REALTORS®) and/or the quality of services they provide (MLS®, Multiple Listing Service®)

Listing information last updated on April 16th, 2025 at 4:17pm MDT