

\$239,000 - 52229 Rge Road 15, Rural Parkland County

MLS® #E4425000

\$239,000

0 Bedroom, 0.00 Bathroom,
Rural on 3.23 Acres

None, Rural Parkland County, AB

Beautiful treed lot! 3.23 acres, out of subdivision. Gas and power to the property line. Minutes away from Stony Plain, and in the Blueberry School Zone. Very private lot to build your dream home or operate your business from! West of Stony Plain on HWY 628 and south on RR 15

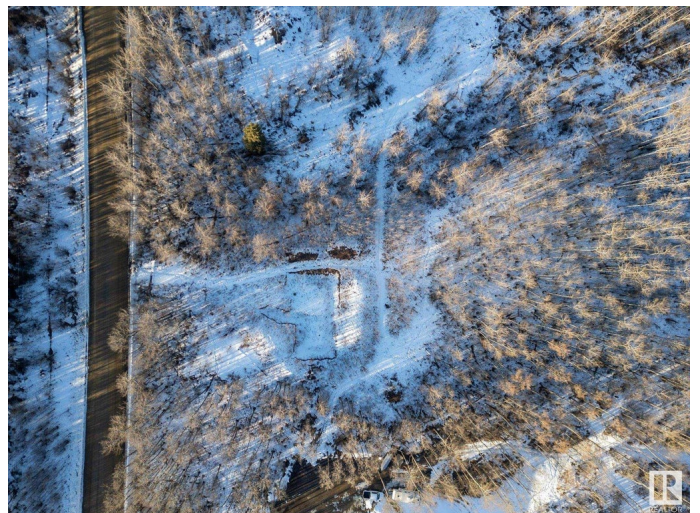
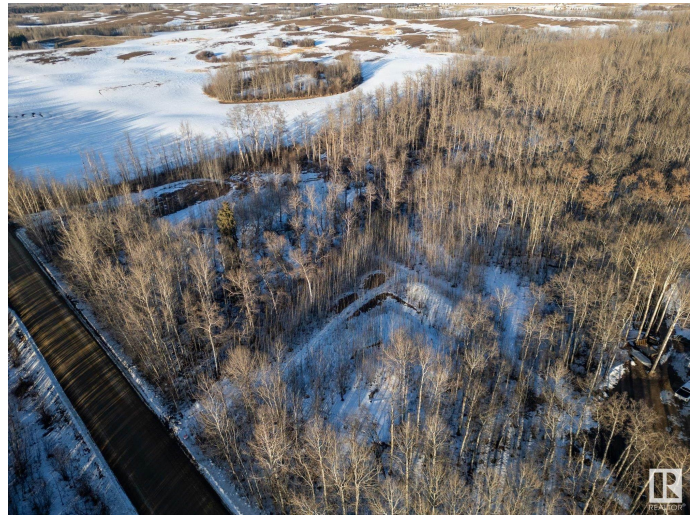
Essential Information

MLS® #	E4425000
Price	\$239,000
Bathrooms	0.00
Acres	3.23
Type	Rural
Sub-Type	Vacant Lot/Land
Status	Active

Community Information

Address	52229 Rge Road 15
Area	Rural Parkland County
Subdivision	None
City	Rural Parkland County
County	ALBERTA
Province	AB
Postal Code	T7Y 2E6

Exterior



Exterior Features Golf Nearby, Private Setting, Treed Lot

Additional Information

Date Listed March 7th, 2025

Days on Market 36

Zoning Zone 70

DATA IS DEEMED RELIABLE BUT IS NOT GUARANTEED ACCURATE BY THE REALTORS® ASSOCIATION OF EDMONTON. COPYRIGHT 2025 BY THE REALTORS® ASSOCIATION OF EDMONTON. ALL RIGHTS RESERVED. Trademarks are owned or controlled by the Canadian Real Estate Association (CREA) and identify real estate professionals who are members of CREA (REALTOR®, REALTORS®) and/or the quality of services they provide (MLS®, Multiple Listing Service®)

Listing information last updated on April 12th, 2025 at 2:47am MDT