

Courtesy Of Maninder S Grewal Of Exp Realty

\$199,999 - 107 4835 104a Street, Edmonton

MLS® #E4425592

\$199,999

2 Bedroom, 1.00 Bathroom, 939 sqft
Condo / Townhouse on 0.00 Acres

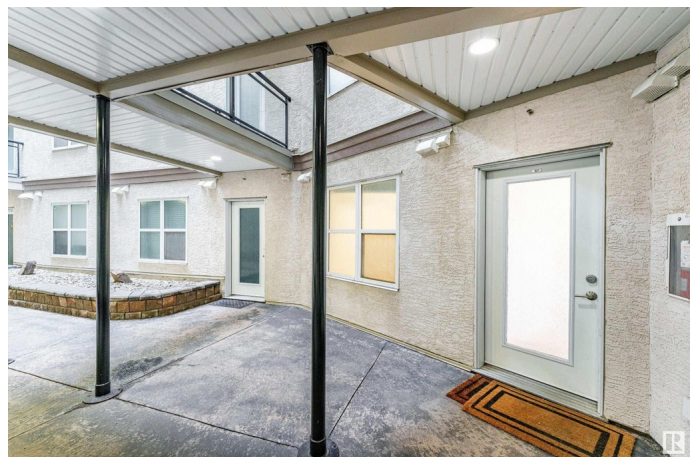
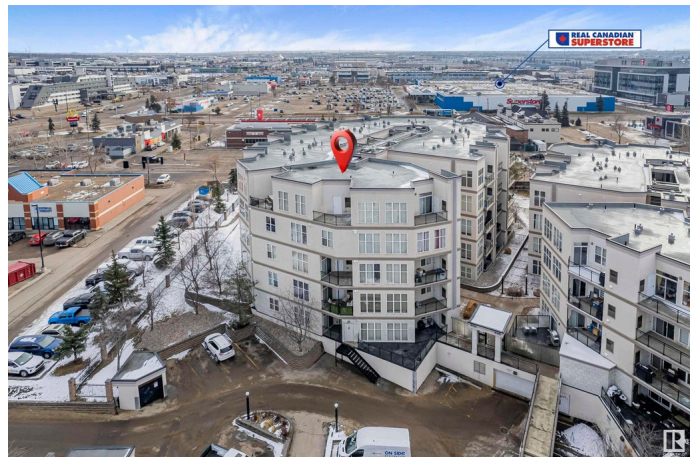
Empire Park, Edmonton, AB

LOW CONDO FEES | 9 FT CEILINGS | BRIGHT & SPACIOUS Welcome home! This beautifully kept 2-bedroom, 1-bath condo is the perfect blend of comfort and convenience. Whether you're a first-time buyer, downsizing, or looking for a smart investment, this place has it all! The open-concept layout feels bright and airy, with huge windows that bring in tons of natural light. The kitchen comes with a dishwasher, so no more scrubbing dishes after dinner. The primary bedroom has a walk-in closet, giving you all the storage you need. Step outside onto your cozy patio—a perfect spot to enjoy your morning coffee or unwind after a long day. And you won't have to worry about parking or laundry—this unit includes heated underground parking, a storage cage, and in-suite laundry for ultimate convenience. Located in an unbeatable area, you're just steps from Superstore, the Italian Centre, restaurants, public transit, a clinic, pharmacy, and more. Everything you need is right at your doorstep! Virtually staged.

Built in 2005

Essential Information

MLS® #	E4425592
Price	\$199,999



Bedrooms	2
Bathrooms	1.00
Full Baths	1
Square Footage	939
Acres	0.00
Year Built	2005
Type	Condo / Townhouse
Sub-Type	Lowrise Apartment
Style	Single Level Apartment
Status	Active

Community Information

Address	107 4835 104a Street
Area	Edmonton
Subdivision	Empire Park
City	Edmonton
County	ALBERTA
Province	AB
Postal Code	T6H 0R5

Amenities

Amenities	Ceiling 9 ft., Patio
Parking	Parkade

Interior

Appliances	Dishwasher-Built-In, Dryer, Microwave Hood Fan, Refrigerator, Stove-Electric, Washer
Heating	Forced Air-1, Natural Gas
# of Stories	5
Stories	5
Has Basement	Yes
Basement	None, No Basement

Exterior

Exterior	Wood, Stone, Stucco
Exterior Features	Playground Nearby, Public Transportation, Schools, Shopping Nearby
Roof	Tar & Gravel
Construction	Wood, Stone, Stucco
Foundation	Concrete Perimeter

Additional Information

Date Listed	March 13th, 2025
Days on Market	23
Zoning	Zone 15
Condo Fee	\$337

DATA IS DEEMED RELIABLE BUT IS NOT GUARANTEED ACCURATE BY THE REALTORS® ASSOCIATION OF EDMONTON. COPYRIGHT 2025 BY THE REALTORS® ASSOCIATION OF EDMONTON. ALL RIGHTS RESERVED. Trademarks are owned or controlled by the Canadian Real Estate Association (CREA) and identify real estate professionals who are members of CREA (REALTOR®, REALTORS®) and/or the quality of services they provide (MLS®, Multiple Listing Service®)

Listing information last updated on April 5th, 2025 at 10:47am MDT