

Courtesy Of Melissa Saretsky Of Century 21 Masters

# \$999,888 - 32 Silverchief Crescent, Rural Sturgeon County

MLS® #E4426476

**\$999,888**

4 Bedroom, 3.00 Bathroom, 1,738 sqft  
Rural on 1.04 Acres

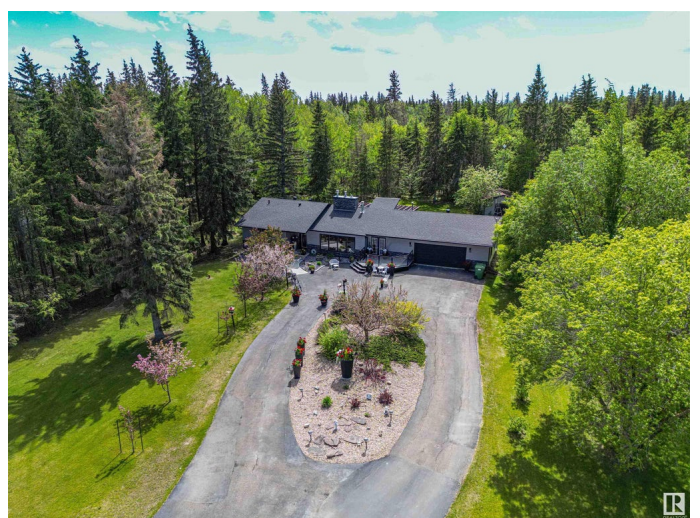
Silverchief, Rural Sturgeon County, AB

Welcome to this stunning bungalow on 1.04-acres backing green space, only minutes from St. Albert. This fully renovated masterpiece offers over 3,000 sqft. of pristine living space, where luxury meets comfort at every turn. Step inside to discover rich hardwood floors, a double-sided natural gas fireplace & a wood burning fireplace both with slate stonework. Enjoy the gourmet kitchen with ample custom cabinetry with built in lighting, a massive island with a built-in cooktop, double ovens, elegant granite countertops, and huge pantry, making this space just as functional as it is beautiful. Every detail has been meticulously updated, from energy-efficient triple-pane windows, new doors & roof, insulation and siding. Modern amenities ensure year-round comfort, including central air, 2 efficient furnaces & fiber optic internet. Outside, the property is just as impressive with mature trees, welcoming front porch and a huge back deck with a gazebo. The attached oversized heated garage provides ample space!

Built in 1976

## Essential Information

MLS® # E4426476



Price	\$999,888
Bedrooms	4
Bathrooms	3.00
Full Baths	3
Square Footage	1,738
Acres	1.04
Year Built	1976
Type	Rural
Sub-Type	Detached Single Family
Style	Bungalow
Status	Active

### **Community Information**

Address	32 Silverchief Crescent
Area	Rural Sturgeon County
Subdivision	Silverchief
City	Rural Sturgeon County
County	ALBERTA
Province	AB
Postal Code	T8N 1M8

### **Amenities**

Features	Air Conditioner, Deck, Vaulted Ceiling
----------	--

### **Interior**

Interior Features	ensuite bathroom
Heating	Forced Air-2, Natural Gas
Stories	2
Has Basement	Yes
Basement	Full, Finished

### **Exterior**

Exterior	Wood
Exterior Features	Golf Nearby, Landscaped, Treed Lot, See Remarks
Construction	Wood
Foundation	Concrete Perimeter

### **Additional Information**

Date Listed	March 19th, 2025
-------------	------------------

Days on Market 24

Zoning Zone 70

DATA IS DEEMED RELIABLE BUT IS NOT GUARANTEED ACCURATE BY THE REALTORS® ASSOCIATION OF EDMONTON. COPYRIGHT 2025 BY THE REALTORS® ASSOCIATION OF EDMONTON. ALL RIGHTS RESERVED. Trademarks are owned or controlled by the Canadian Real Estate Association (CREA) and identify real estate professionals who are members of CREA (REALTOR®, REALTORS®) and/or the quality of services they provide (MLS®, Multiple Listing Service®)

Listing information last updated on April 12th, 2025 at 2:32am MDT