

# \$349,900 - 103 Parkside Drive, Wetaskiwin

MLS® #E4426515

**\$349,900**

2 Bedroom, 2.50 Bathroom, 1,093 sqft

Single Family on 0.00 Acres

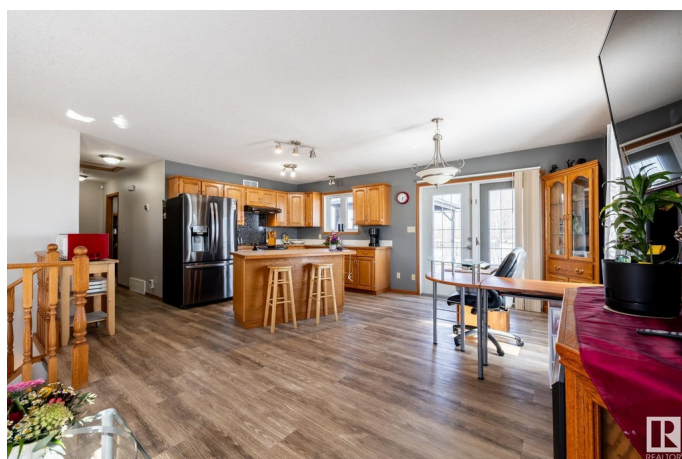
Parkside, Wetaskiwin, AB

Hitting the market for the first time in 19 years, this fantastic corner lot in Parkside is flooded with natural light and packed with upgrades! Enjoy new vinyl plank flooring (2021), a new roof (2018), all new appliances (2020), a new hot water tank (2021), central A/C (2020), a new fence (2020), and permanent exterior Gemstone lighting (2023). The partially finished basement (2022) offers a great rec room and potential for a third bedroom, plus an entire other half with space for two more bedrooms, a home gym, or whatever fits your lifestyle. With roughed-in in-floor heating, this basement is set to be extra cozy! The attached garage (23.5x23) is extra spacious, and with only one neighbor and stunning country views, youâ€™ll feel like you're living in your own private retreat. Don't miss this one!

Built in 2002

## Essential Information

MLS® #	E4426515
Price	\$349,900
Bedrooms	2
Bathrooms	2.50
Full Baths	2
Half Baths	1
Square Footage	1,093
Acres	0.00



Year Built	2002
Type	Single Family
Sub-Type	Detached Single Family
Style	Bi-Level
Status	Active

### **Community Information**

Address	103 Parkside Drive
Area	Wetaskiwin
Subdivision	Parkside
City	Wetaskiwin
County	ALBERTA
Province	AB
Postal Code	T9A 3H1

### **Amenities**

Amenities	Vinyl Windows
Parking Spaces	4
Parking	Double Garage Attached

### **Interior**

Interior Features	ensuite bathroom
Appliances	Air Conditioning-Central, Dishwasher-Built-In, Garage Control, Garage Opener, Hood Fan, Refrigerator-Energy Star, Stacked Washer/Dryer, Storage Shed, Stove-Electric, Vacuum System Attachments, Vacuum Systems, Window Coverings, TV Wall Mount
Heating	Forced Air-1, Natural Gas
Stories	2
Has Basement	Yes
Basement	Full, Partially Finished

### **Exterior**

Exterior	Wood, Vinyl
Exterior Features	Back Lane, Backs Onto Park/Trees, Corner Lot, Fenced, Flat Site, Golf Nearby, Landscaped, Schools
Roof	Asphalt Shingles
Construction	Wood, Vinyl
Foundation	Concrete Perimeter

### **Additional Information**

Date Listed March 20th, 2025

Days on Market 17

Zoning Zone 80

DATA IS DEEMED RELIABLE BUT IS NOT GUARANTEED ACCURATE BY THE REALTORS® ASSOCIATION OF EDMONTON. COPYRIGHT 2025 BY THE REALTORS® ASSOCIATION OF EDMONTON. ALL RIGHTS RESERVED. Trademarks are owned or controlled by the Canadian Real Estate Association (CREA) and identify real estate professionals who are members of CREA (REALTOR®, REALTORS®) and/or the quality of services they provide (MLS®, Multiple Listing Service®)

Listing information last updated on April 6th, 2025 at 2:02pm MDT