

## \$695,000 - 204 9720 106 Street, Edmonton

MLS® #E4427606

### \$695,000

3 Bedroom, 2.50 Bathroom, 1,908 sqft  
Condo / Townhouse on 0.00 Acres

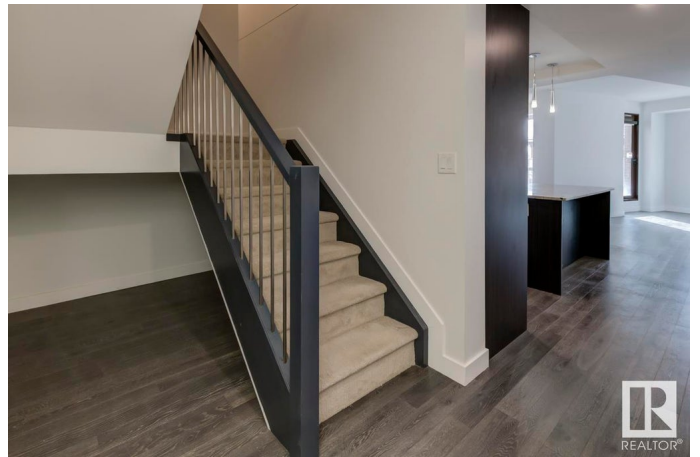
Downtown (Edmonton), Edmonton, AB

This ultra-rare, three-storey TOWNHOUSE in Symphony Tower is the pinnacle of luxury living. Spanning 1,908 sq.ft., it offers an unrivaled blend of modern design and sophisticated upgrades. Three spacious bedrooms, two balconies w/ views of Walterdale Bridge & Legislature grounds, & expansive triple pane windows create an airy, light-filled retreat. Exquisite hardwood floors set the tone upon entry, leading to a chefs kitchen w/ sleek two-tone cabinetry, quartz counters, premium S/S appliances—featuring 36" JennAir Gas range—and large island w/ seating. The second level boasts two bedrooms (one w/ a private balcony), bonus rm, laundry, & a chic 4-pc bath. The entire third floor is a lavish primary suite w/ great views & a spa-inspired 5-pc ensuite w/ a jetted tub. Enjoy exclusive access to Symphony Tower's elite amenities: a state-of-the-art fitness center, elegant social lounge, outdoor terrace, car wash, & 2 coveted heated & secure underground parking spaces. This is an opportunity unlike any other.

Built in 2018

### Essential Information

MLS® #	E4427606
Price	\$695,000



Bedrooms	3
Bathrooms	2.50
Full Baths	2
Half Baths	1
Square Footage	1,908
Acres	0.00
Year Built	2018
Type	Condo / Townhouse
Sub-Type	Townhouse
Style	3 Storey
Status	Active

### Community Information

Address	204 9720 106 Street
Area	Edmonton
Subdivision	Downtown (Edmonton)
City	Edmonton
County	ALBERTA
Province	AB
Postal Code	T5K 0K8

### Amenities

Amenities	Air Conditioner, Car Wash, Exercise Room, Parking-Extra, Patio, Smart/Program. Thermostat, Social Rooms, Storage-In-Suite
Parking	Underground

### Interior

Interior Features	ensuite bathroom
Appliances	Dishwasher-Built-In, Dryer, Oven-Microwave, Refrigerator, Stove-Gas, Vacuum System Attachments, Vacuum Systems, Washer, Window Coverings
Heating	Forced Air-1, Natural Gas
Fireplace	Yes
Fireplaces	Mantel, Tile Surround
Stories	3
Has Basement	Yes
Basement	None, No Basement

### Exterior

Exterior	Concrete, Brick
Exterior Features	Golf Nearby, Park/Reserve, Public Transportation, Shopping Nearby, View Downtown
Roof	Tar & Gravel
Construction	Concrete, Brick
Foundation	Concrete Perimeter

### **Additional Information**

Date Listed	March 26th, 2025
Days on Market	24
Zoning	Zone 12
Condo Fee	\$1,192

DATA IS DEEMED RELIABLE BUT IS NOT GUARANTEED ACCURATE BY THE REALTORS® ASSOCIATION OF EDMONTON. COPYRIGHT 2025 BY THE REALTORS® ASSOCIATION OF EDMONTON. ALL RIGHTS RESERVED. Trademarks are owned or controlled by the Canadian Real Estate Association (CREA) and identify real estate professionals who are members of CREA (REALTOR®, REALTORS®) and/or the quality of services they provide (MLS®, Multiple Listing Service®)

Listing information last updated on April 19th, 2025 at 6:32am MDT