

# \$1,700,000 - 25 52258 Rge Road 231, Rural Strathcona County

MLS® #E4428433

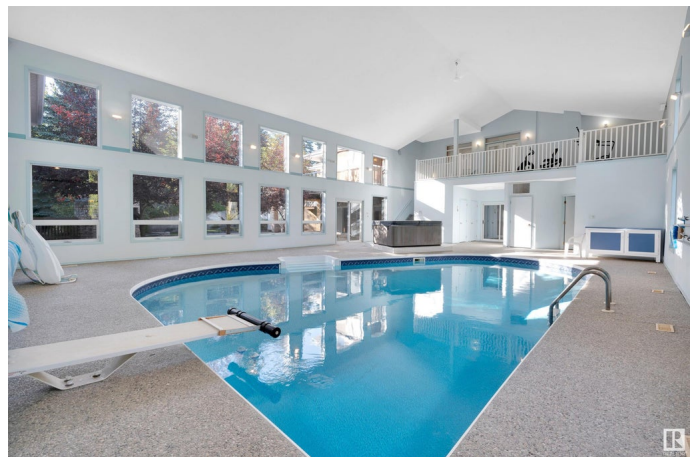
**\$1,700,000**

4 Bedroom, 4.50 Bathroom, 3,334 sqft

Rural on 2.01 Acres

Windsor Estates, Rural Strathcona County, AB

ENTERTAINERS DREAM HOME, with over 6900sqft of SPACE including INDOOR POOL, 4 bedrooms, 6.5 baths, plus 1800sqft with TRIPLE garage & 54x28 SHOP, sitting on a PRIVATE & PICTURESQUE 2.01 acres in the desirable community of Windsor Estates mins to Sherwood Park. A grande entrance invites you into find a family sized kitchen that offers an abundance of cabinets, newer appliances & quartz island that over looks the living rm with fireplace & updated hardwood throughout the dining rm & den (could be main floor bdrm). 3pc bath, 1/2 bath & mud room compliment the layout. Open the patio door & watch the kids in the pool! Moving upstairs you will find a king sized primary suite with balcony, huge WI closet & luxurious ensuite. 2 bdrms, 1 with WI closet, 1 with dual closets, laundry rm & 4pc bath complete the upper level. The WALKOUT basement is sure to IMPRESS, with rec rm complete with bar & fireplace plus access to the gorgeous patio with BI GAS BBQ GRILL & pool. 4th bdrm, den & bath complete this MUST SEE HOME.



Built in 1994

## Essential Information

MLS® #

E4428433

|                |                        |
|----------------|------------------------|
| Price          | \$1,700,000            |
| Bedrooms       | 4                      |
| Bathrooms      | 4.50                   |
| Full Baths     | 4                      |
| Half Baths     | 1                      |
| Square Footage | 3,334                  |
| Acres          | 2.01                   |
| Year Built     | 1994                   |
| Type           | Rural                  |
| Sub-Type       | Detached Single Family |
| Style          | 2 Storey               |
| Status         | Active                 |

### **Community Information**

|             |                         |
|-------------|-------------------------|
| Address     | 25 52258 Rge Road 231   |
| Area        | Rural Strathcona County |
| Subdivision | Windsor Estates         |
| City        | Rural Strathcona County |
| County      | ALBERTA                 |
| Province    | AB                      |
| Postal Code | T8B 1M8                 |

### **Amenities**

|          |   |
|----------|---|
| Features | Air Conditioner, Barbecue-Built-In, Deck, Hot Tub, Parking-Extra, Patio, Pool-Indoor, R.V. Storage, Sauna; Swirlpool; Steam, Sprinkler Sys-Underground, Vinyl Windows, Walkout Basement, Wet Bar, See Remarks |
|----------|---|

### **Interior**

|                   |                           |
|-------------------|---------------------------|
| Interior Features | ensuite bathroom          |
| Heating           | Forced Air-1, Natural Gas |
| Fireplace         | Yes                       |
| Stories           | 3                         |
| Has Basement      | Yes                       |
| Basement          | Full, Finished            |

### **Exterior**

|                   |  |
|-------------------|--|
| Exterior          | Wood   |
| Exterior Features | Cul-De-Sac, Landscaped, Private Setting, Schools, Shopping Nearby, |

|              |                        |
|--------------|------------------------|
|              | Treed Lot, See Remarks |
| Construction | Wood                   |
| Foundation   | Concrete Perimeter     |

### **Additional Information**

|             |                 |
|-------------|-----------------|
| Date Listed | April 1st, 2025 |
|-------------|-----------------|

|                |   |
|----------------|---|
| Days on Market | 8 |
|----------------|---|

|        |         |
|--------|---------|
| Zoning | Zone 80 |
|--------|---------|

DATA IS DEEMED RELIABLE BUT IS NOT GUARANTEED ACCURATE BY THE REALTORS® ASSOCIATION OF EDMONTON. COPYRIGHT 2025 BY THE REALTORS® ASSOCIATION OF EDMONTON. ALL RIGHTS RESERVED. Trademarks are owned or controlled by the Canadian Real Estate Association (CREA) and identify real estate professionals who are members of CREA (REALTOR®, REALTORS®) and/or the quality of services they provide (MLS®, Multiple Listing Service®)

Listing information last updated on April 9th, 2025 at 1:02am MDT