

\$539,000 - 5414b Twp Road 535, Rural Parkland County

MLS® #E4428558

\$539,000

2 Bedroom, 2.00 Bathroom, 1,214 sqft

Rural on 2.67 Acres

None, Rural Parkland County, AB

Boating, golf and acreage life... doesn't get better than that! Pleased to present this original owner 2 bed/2 bath fully finished bungalow located on 2.67 acres close to the south shore of Lake Isle. Enjoy your outside coffee/dining and views on the half wrap around deck. Pride of ownership is evident as you enter the large open plan. The kitchen with plenty of cabinet/counter space sides the large dining area perfect for the large family gatherings. The living room is anchored by the cozy stone faced woodstove. The primary bedroom and 4 piece bathroom round out the main floor. Downstairs the in-floor heat welcomes you to the huge family/rec room complete with a 2nd bedroom and 3 piece bath. Plenty of room for all the toys with the double detached/heated garage, many storage sheds and a Quonset. Two ways to enter the property makes it easy to pull through with the big toys! Built-in ceiling speakers in the house, epoxy floor in the garage and meticulous landscaping just add to this gem.

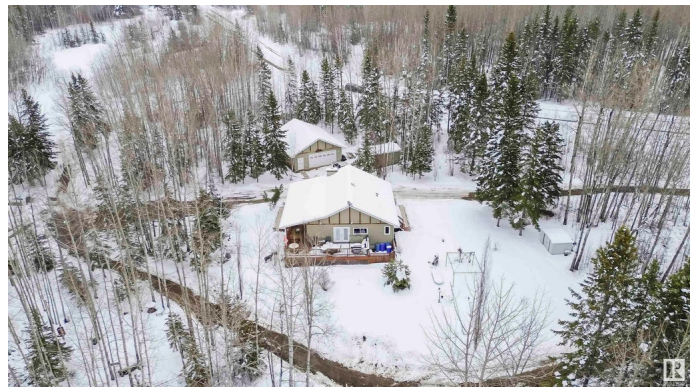
Built in 2010

Essential Information

MLS® # E4428558

Price \$539,000

Bedrooms 2



Bathrooms	2.00
Full Baths	2
Square Footage	1,214
Acres	2.67
Year Built	2010
Type	Rural
Sub-Type	Detached Single Family
Style	Bungalow
Status	Active

Community Information

Address	5414b Twp Road 535
Area	Rural Parkland County
Subdivision	None
City	Rural Parkland County
County	ALBERTA
Province	AB
Postal Code	T0E 0V0

Amenities

Features	Deck
----------	------

Interior

Heating	Forced Air-1, In Floor Heat System, Natural Gas
Fireplace	Yes
Stories	2
Has Basement	Yes
Basement	Full, Finished

Exterior

Exterior	Wood
Exterior Features	Boating, Golf Nearby, Lake View, Private Setting
Construction	Wood
Foundation	Concrete Perimeter

Additional Information

Date Listed	April 1st, 2025
Days on Market	3
Zoning	Zone 70

DATA IS DEEMED RELIABLE BUT IS NOT GUARANTEED ACCURATE BY THE REALTORS® ASSOCIATION OF EDMONTON. COPYRIGHT 2025 BY THE REALTORS® ASSOCIATION OF EDMONTON. ALL RIGHTS RESERVED. Trademarks are owned or controlled by the Canadian Real Estate Association (CREA) and identify real estate professionals who are members of CREA (REALTOR®, REALTORS®) and/or the quality of services they provide (MLS®, Multiple Listing Service®)

Listing information last updated on April 4th, 2025 at 5:47pm MDT