

\$315,000 - 12123 123 Street, Edmonton

MLS® #E4428596

\$315,000

3 Bedroom, 2.00 Bathroom, 816 sqft
Single Family on 0.00 Acres

Prince Charles, Edmonton, AB

ATTENTION INVESTORS! Redevelopment opportunity on this 50X140 lot zoned RF3 in the central neighbourhood of Prince Charles. Long term owner, huge 655m2 lot with one of a kind massive triple OVERSIZED garage/shop. Former auto business was run in the garage - Loaded with potential. Just minutes to Downtown, NAIT, Macewan, parks & shopping. So many options â€œ build new or renovate. Note: Property â€œsold as-is.â€•

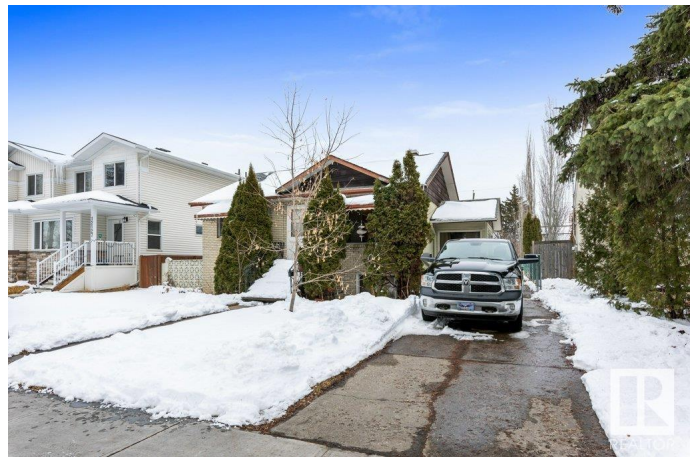
Built in 1949

Essential Information

| | |
|----------------|------------------------|
| MLS® # | E4428596 |
| Price | \$315,000 |
| Bedrooms | 3 |
| Bathrooms | 2.00 |
| Full Baths | 2 |
| Square Footage | 816 |
| Acres | 0.00 |
| Year Built | 1949 |
| Type | Single Family |
| Sub-Type | Detached Single Family |
| Style | Bungalow |
| Status | Active |

Community Information

Address 12123 123 Street



| | |
|-------------|----------------|
| Area | Edmonton |
| Subdivision | Prince Charles |
| City | Edmonton |
| County | ALBERTA |
| Province | AB |
| Postal Code | T5L 0H4 |

Amenities

| | |
|-----------|------------------------|
| Amenities | See Remarks |
| Parking | Triple Garage Detached |

Interior

| | |
|--------------|---------------------------|
| Appliances | None |
| Heating | Forced Air-1, Natural Gas |
| Fireplace | Yes |
| Fireplaces | Brick Facing |
| Stories | 2 |
| Has Basement | Yes |
| Basement | Full, Finished |

Exterior

| | |
|-------------------|--------------------|
| Exterior | Wood, See Remarks |
| Exterior Features | Back Lane |
| Roof | Asphalt Shingles |
| Construction | Wood, See Remarks |
| Foundation | Concrete Perimeter |

Additional Information

| | |
|----------------|-----------------|
| Date Listed | April 2nd, 2025 |
| Days on Market | 2 |
| Zoning | Zone 04 |

DATA IS DEEMED RELIABLE BUT IS NOT GUARANTEED ACCURATE BY THE REALTORS® ASSOCIATION OF EDMONTON. COPYRIGHT 2025 BY THE REALTORS® ASSOCIATION OF EDMONTON. ALL RIGHTS RESERVED. Trademarks are owned or controlled by the Canadian Real Estate Association (CREA) and identify real estate professionals who are members of CREA (REALTOR®, REALTORS®) and/or the quality of services they provide (MLS®, Multiple Listing Service®)

Listing information last updated on April 4th, 2025 at 12:02pm MDT