

\$399,900 - 18515 68 Avenue, Edmonton

MLS® #E4430473

\$399,900

5 Bedroom, 2.50 Bathroom, 1,359 sqft

Single Family on 0.00 Acres

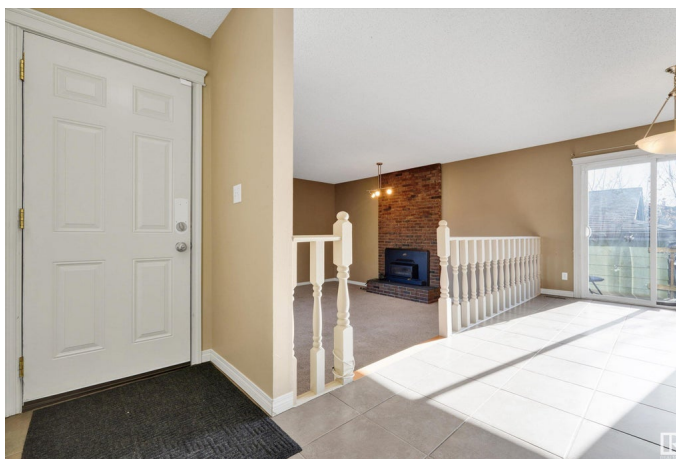
Ormsby Place, Edmonton, AB

5 bedroom bungalow in Ormsby on a MASSIVE cul-de-sac lot. This 1,359 sf home features a SEPERATE back entrance with a secondary/mother in law suite in the basement. The main level features an open concept kitchen complete with large island overlooking the sunken living room with a wood burning fireplace. Patio doors lead out to the deck, huge yard and oversized double garage. The primary bedroom features a walk through closet leading to the private ensuite. 2 additional bedrooms and a full 4 pc bathroom complete the main level. The basement level offers 2 bedrooms, a 4 pc bathroom, a full kitchen and separate laundry along with a 2 large recreation/living areas.

Built in 1978

Essential Information

| | |
|----------------|-----------|
| MLS® # | E4430473 |
| Price | \$399,900 |
| Bedrooms | 5 |
| Bathrooms | 2.50 |
| Full Baths | 2 |
| Half Baths | 1 |
| Square Footage | 1,359 |
| Acres | 0.00 |
| Year Built | 1978 |



| | |
|----------|------------------------|
| Type | Single Family |
| Sub-Type | Detached Single Family |
| Style | Bungalow |
| Status | Active |

Community Information

| | |
|-------------|-----------------|
| Address | 18515 68 Avenue |
| Area | Edmonton |
| Subdivision | Ormsby Place |
| City | Edmonton |
| County | ALBERTA |
| Province | AB |
| Postal Code | T5T 2M8 |

Amenities

| | |
|----------------|------------------------|
| Amenities | See Remarks |
| Parking Spaces | 4 |
| Parking | Double Garage Attached |

Interior

| | |
|-------------------|-----------------------------------------------------------------------------------------|
| Interior Features | ensuite bathroom |
| Appliances | Window Coverings, Dryer-Two, Refrigerators-Two, Stoves-Two, Washers-Two, Dishwasher-Two |
| Heating | Forced Air-1, Natural Gas |
| Fireplace | Yes |
| Fireplaces | Brick Facing |
| Stories | 2 |
| Has Basement | Yes |
| Basement | Full, Finished |

Exterior

| | |
|-------------------|--------------------------------------------------------------------------------------------------------------------------|
| Exterior | Wood, Metal |
| Exterior Features | Cul-De-Sac, Fenced, Golf Nearby, Landscaped, Level Land, No Back Lane, Playground Nearby, Public Transportation, Schools |
| Roof | Asphalt Shingles |
| Construction | Wood, Metal |
| Foundation | Concrete Perimeter |

School Information

| | |
|------------|----------------------------|
| Elementary | OrmsbySchool/Good Shepherd |
| Middle | S Bruce Smith |
| High | Jasper Place/St.OscarRomer |

Additional Information

| | |
|----------------|------------------|
| Date Listed | April 11th, 2025 |
| Days on Market | 8 |
| Zoning | Zone 20 |

DATA IS DEEMED RELIABLE BUT IS NOT GUARANTEED ACCURATE BY THE REALTORS® ASSOCIATION OF EDMONTON. COPYRIGHT 2025 BY THE REALTORS® ASSOCIATION OF EDMONTON. ALL RIGHTS RESERVED.Trademarks are owned or controlled by the Canadian Real Estate Association (CREA) and identify real estate professionals who are members of CREA (REALTOR®, REALTORS®) and/or the quality of services they provide (MLS®, Multiple Listing Service®)

Listing information last updated on April 19th, 2025 at 6:17am MDT