

# \$479,900 - 307 Foxboro Drive, Sherwood Park

MLS® #E4431426

**\$479,900**

3 Bedroom, 2.50 Bathroom, 1,518 sqft

Single Family on 0.00 Acres

Foxboro, Sherwood Park, AB

Located in the heart of Sherwood Park, this beautiful home combines style and functionality. The bright, open floor plan features south-facing windows that fill the space with natural light. A cozy gas fireplace adds warmth and charm to the living area, perfect for relaxation and entertaining. The main floor boasts an upgraded kitchen with an eating bar, ample storage, and top-tier appliances. Upstairs, the spacious primary suite includes a private ensuite and walk-in closet, while two additional bedrooms and a 4-piece bath complete the upper level. Recent updates include a hot water tank that's just 5 years old and a brand new furnace installed in 2023, offering peace of mind and energy efficiency. Outside, enjoy a private backyard, along with a convenient 3-bay driveway and a double attached garage providing plenty of parking and storage. Situated in a family-friendly neighbourhood, you're minutes from scenic trails, parks, and schools. All this home needs is YOU!

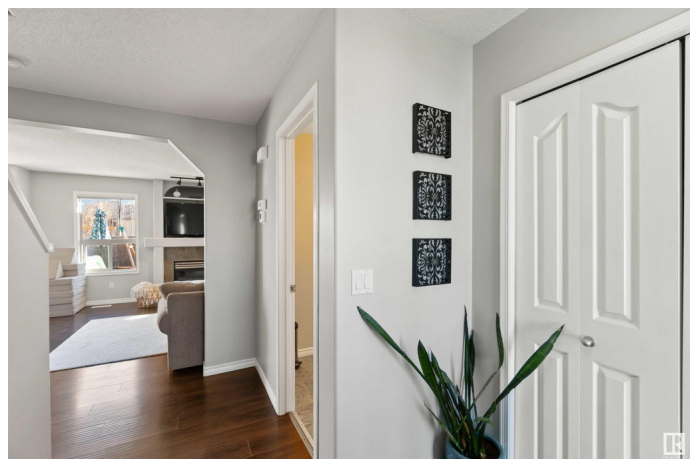
Built in 2006

## Essential Information

MLS® # E4431426

Price \$479,900

Bedrooms 3



Bathrooms	2.50
Full Baths	2
Half Baths	1
Square Footage	1,518
Acres	0.00
Year Built	2006
Type	Single Family
Sub-Type	Detached Single Family
Style	2 Storey
Status	Active

### Community Information

Address	307 Foxboro Drive
Area	Sherwood Park
Subdivision	Foxboro
City	Sherwood Park
County	ALBERTA
Province	AB
Postal Code	T8A 2H4

### Amenities

Amenities	Deck, Detectors Smoke, Front Porch
Parking Spaces	2
Parking	Double Garage Attached

### Interior

Interior Features	ensuite bathroom
Appliances	Dishwasher-Built-In, Dryer, Garage Control, Garage Opener, Hood Fan, Refrigerator, Storage Shed, Stove-Electric, Washer, Window Coverings
Heating	Forced Air-1, Natural Gas
Fireplace	Yes
Fireplaces	Mantel, Tile Surround
Stories	2
Has Basement	Yes
Basement	Full, Unfinished

### Exterior

Exterior	Wood, Vinyl
Exterior Features	Fenced, Flat Site, Golf Nearby, Park/Reserve, Playground Nearby,

Public Transportation, Schools, Shopping Nearby

Roof	Asphalt Shingles
Construction	Wood, Vinyl
Foundation	Concrete Perimeter

**School Information**

Elementary	WES HOSFORD ELE
Middle	F R HAYTHORNE
High	BEV FACEY COMP

**Additional Information**

Date Listed	April 17th, 2025
Days on Market	3
Zoning	Zone 25

DATA IS DEEMED RELIABLE BUT IS NOT GUARANTEED ACCURATE BY THE REALTORS® ASSOCIATION OF EDMONTON. COPYRIGHT 2025 BY THE REALTORS® ASSOCIATION OF EDMONTON. ALL RIGHTS RESERVED.Trademarks are owned or controlled by the Canadian Real Estate Association (CREA) and identify real estate professionals who are members of CREA (REALTOR®, REALTORS®) and/or the quality of services they provide (MLS®, Multiple Listing Service®)

Listing information last updated on April 20th, 2025 at 12:02pm MDT