

\$399,900 - 9332 153 Street, Edmonton

MLS® #E4431903

\$399,900

3 Bedroom, 2.00 Bathroom, 986 sqft
Single Family on 0.00 Acres

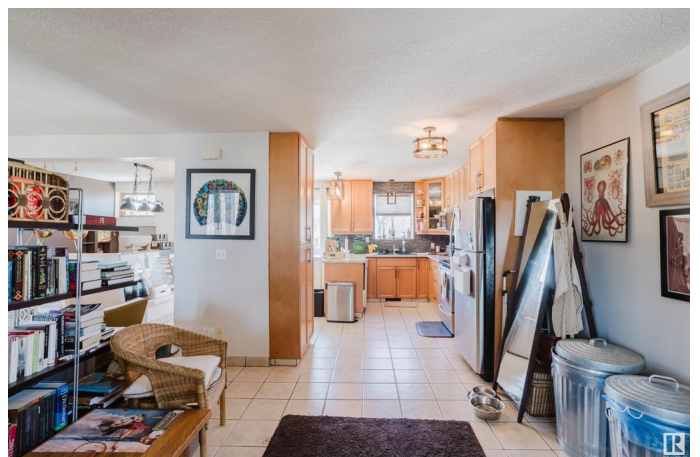
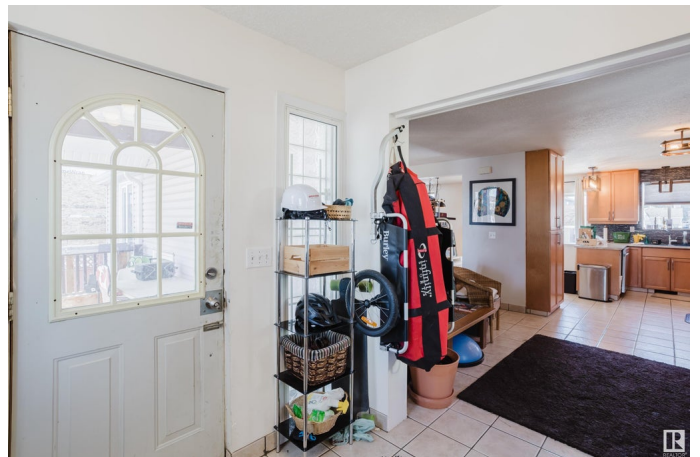
Sherwood, Edmonton, AB

Excellent opportunity for first-time buyers, investors, or future redevelopment! This charming character home sits on a massive 50' x 148' (687m²) lot in a prime location. Enjoy your morning coffee on the east-facing front deck as the sun rises. Step inside to a spacious front foyer that leads to a bright, open-concept kitchen with plenty of cupboard and counter space. The main floor offers a large living area perfect for relaxing or entertaining, two generous bedrooms, and a stylish 3-piece bath. The partially finished basement adds extra potential with a third bedroom, 4-piece bathroom, laundry area, and room to expand. The west-facing backyard is a true retreat—a huge and sun-drenched, with an oversized double detached garage. Nestled in a highly desirable area with quick access to the new LRT line, schools, parks, public transit, the Whitemud, downtown, Misericordia Hospital, and West Edmonton Mall. A rare find with incredible potential!

Built in 1953

Essential Information

MLS® #	E4431903
Price	\$399,900
Bedrooms	3
Bathrooms	2.00



Full Baths	2
Square Footage	986
Acres	0.00
Year Built	1953
Type	Single Family
Sub-Type	Detached Single Family
Style	Bungalow
Status	Active

Community Information

Address	9332 153 Street
Area	Edmonton
Subdivision	Sherwood
City	Edmonton
County	ALBERTA
Province	AB
Postal Code	T5R 1R1

Amenities

Amenities	Front Porch
Parking	Double Garage Detached

Interior

Appliances	Dishwasher-Built-In, Dryer, Garage Control, Hood Fan, Refrigerator, Washer, Window Coverings
Heating	Forced Air-1, Natural Gas
Stories	1
Has Basement	Yes
Basement	Full, Partially Finished

Exterior

Exterior	Wood, Vinyl
Exterior Features	Back Lane, Fenced, Playground Nearby, Public Transportation, Schools, Shopping Nearby
Roof	Asphalt Shingles
Construction	Wood, Vinyl
Foundation	Concrete Perimeter

Additional Information

Date Listed April 19th, 2025

Days on Market 10

Zoning Zone 22

DATA IS DEEMED RELIABLE BUT IS NOT GUARANTEED ACCURATE BY THE REALTORS® ASSOCIATION OF EDMONTON. COPYRIGHT 2025 BY THE REALTORS® ASSOCIATION OF EDMONTON. ALL RIGHTS RESERVED. Trademarks are owned or controlled by the Canadian Real Estate Association (CREA) and identify real estate professionals who are members of CREA (REALTOR®, REALTORS®) and/or the quality of services they provide (MLS®, Multiple Listing Service®)

Listing information last updated on April 29th, 2025 at 6:17am MDT