

# \$99,900 - 1017 48520 Hwy 2a, Rural Leduc County

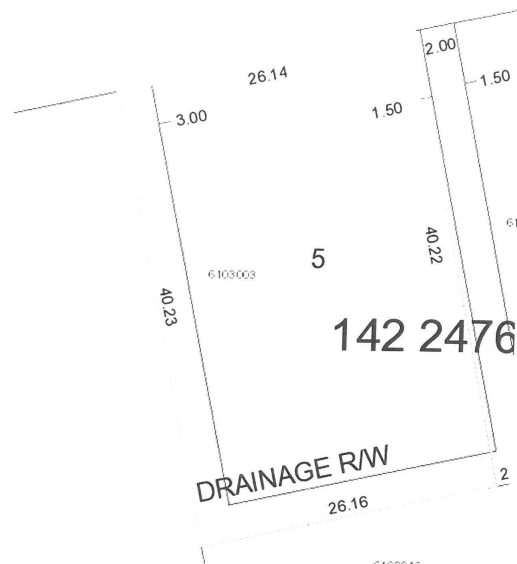
MLS® #E4432023

**\$99,900**

0 Bedroom, 0.00 Bathroom,  
Rural on 0.26 Acres

None, Rural Leduc County, AB

Excellent location for your new home. Power and gas at the property line. Easy access to Hwy. 2A. minutes to Leduc, Millet, Edmonton International. Best of all AFFORDABLE.



## Essential Information

MLS® #	E4432023
Price	\$99,900
Bathrooms	0.00
Acres	0.26
Type	Rural
Sub-Type	Vacant Lot/Land
Status	Active

## Community Information

Address	1017 48520 Hwy 2a
Area	Rural Leduc County
Subdivision	None
City	Rural Leduc County
County	ALBERTA
Province	AB
Postal Code	T4X 2V4

## Exterior

Exterior Features Not Landscaped, See Remarks

## Additional Information

Date Listed April 21st, 2025

Days on Market 4

Zoning Zone 80

DATA IS DEEMED RELIABLE BUT IS NOT GUARANTEED ACCURATE BY THE REALTORS® ASSOCIATION OF EDMONTON. COPYRIGHT 2025 BY THE REALTORS® ASSOCIATION OF EDMONTON. ALL RIGHTS RESERVED. Trademarks are owned or controlled by the Canadian Real Estate Association (CREA) and identify real estate professionals who are members of CREA (REALTOR®, REALTORS®) and/or the quality of services they provide (MLS®, Multiple Listing Service®)

Listing information last updated on April 24th, 2025 at 11:47pm MDT